

LAVORO®
ENGINEERING LIFE

FROM
SHOEMAKERS
TO
SHOE
ENGINEERS

since
1986

SAFETY FOOTWEAR

2025



COLLECTIONS

- 7** SPACE TRIP
- 12** SPACE ODDITY
- 15** COUNTRYSIDE
- 23** T.T.
- 34** HIGHWAY
- 39** ENERGY
- 42** CUP
- 44** HEAVY DUTY
- 46** TECH
- 53** FF/RF
- 58** WOMAN

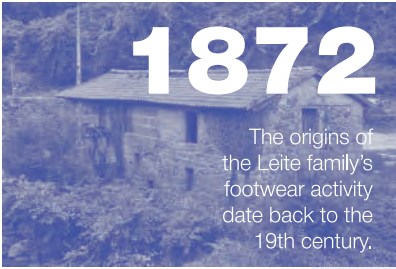
INFORMATION

- 63** ACCESSORIES
- 64** SPODOS
- 66** TECHNICAL INFORMATION

Actually, it all started in

1872

The origins of the Leite family's footwear activity date back to the 19th century.



1988

Official presentation of Lavoro brand at the Expoprotection Fair - Paris, France.



1986

ICC, the company that owns Lavoro, is established by Teófilo Leite.



1987

First export, heading to the Ducht market.

2000

Launch of the first Lavoro women's collection, the Y2K range.



2006

Lavoro launches the world's first insoles on the ballistics generation, incorporating kevlar.



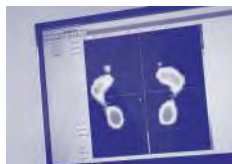
2019

Lavoro acquires new facilities to accommodate the warehouse and a new production unit.



2011

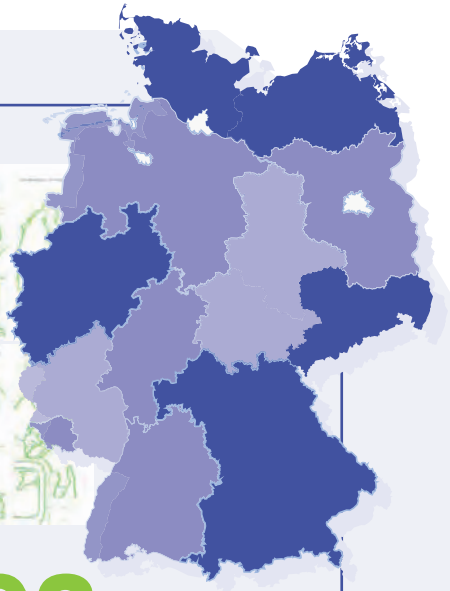
Lavoro creates SPodos, a foot science center focused on engineering, podiatry and biomechanics





1989

Lavoro participates for the first time in A+A Fair.



1992

Constitution of Lavoro Deutschland

1995

Lavoro patents "Clima Cork System", the first insole built in cork



40 YEARS

2022

Lavoro begins journey to conquer the future: reconstruction of the historic industrial plant.



2023

A special focus on green production: robotization, green energy, supernova foam and innovative recycled material injection technology.



Lavoro is the first Safety Footwear brand to launch a whole collection made with Super Critical Foam (SCF).



2025

The Lab Era: Where exploration becomes application, and innovation turns into proof. Our 19th consecutive participation at A+A marks a new chapter of technology, engineering, and in motion.



EXPLORING NEW HORIZONS

At Lavoro, we walk towards new horizons.

Where engineering meets podiatry, and innovation is born from science, research, and precision. Every pair of our professional shoes is the result of advanced product development, tested in the laboratory and perfected through real-world experience.

Our commitment to **quality** drives us to continually explore new materials, technologies, and ergonomic solutions that redefine **comfort, safety, and performance** in professional footwear. With a foundation built on research and a vision focused on innovation, Lavoro creates shoes engineered **for those who move the world.**

**Engineering comfort.
Redefining protection.
Expanding horizons.**

SPACE TRIP collection





SUPER CRITICAL FOAM

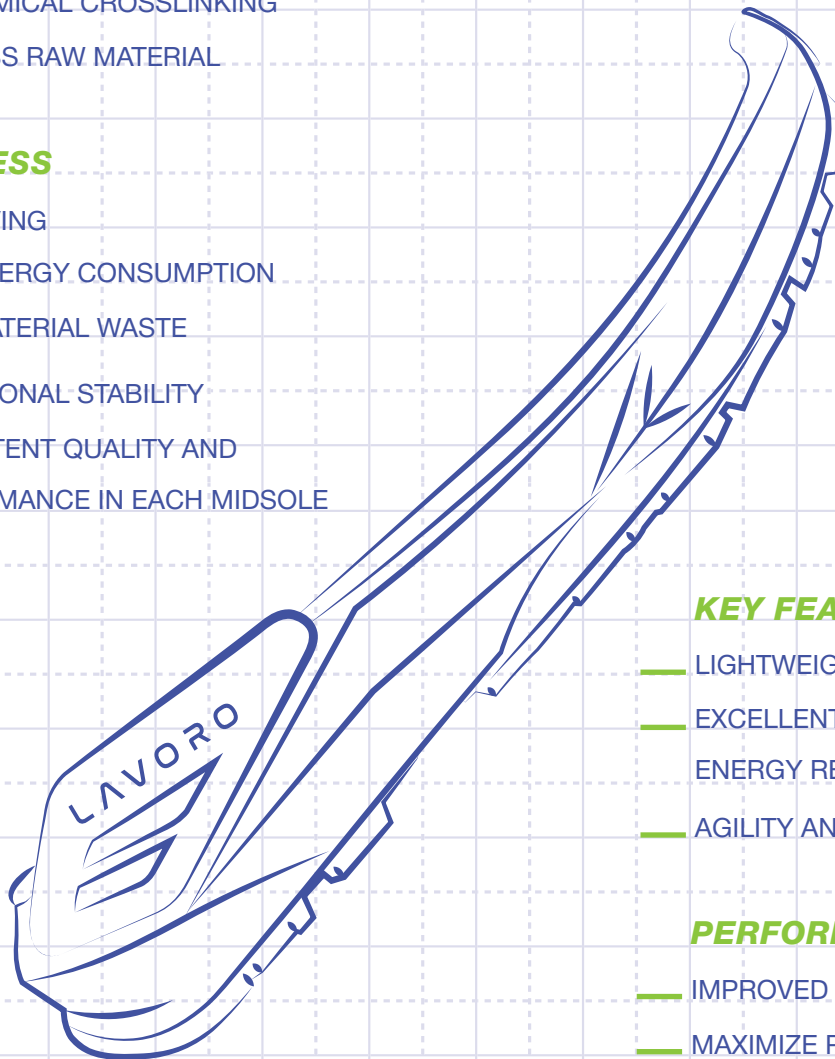


SUSTAINABILITY

- 100% RECYCLABLE AND REUSABLE MIDSOLE
- NO CHEMICAL CROSSLINKING
- 80% LESS RAW MATERIAL

PROCESS

- CO2 SAVING
- LESS ENERGY CONSUMPTION
- LESS MATERIAL WASTE
- DIMENSIONAL STABILITY
- CONSISTENT QUALITY AND PERFORMANCE IN EACH MIDSOLE



KEY FEATURES

- LIGHTWEIGHT
- EXCELLENT REBOUND/ENERGY RETURN
- AGILITY AND COMFORT

PERFORMANCE

- IMPROVED SHOCK ABSORPTION
- MAXIMIZE PERFORMANCE AND EFFICIENCY
- SUPERIOR ELASTICITY

SUPERNOVA SCF IS A REVOLUTIONARY FOAM, 100% RECYCLABLE, WITH UNIFORM MICROCELLULAR STRUCTURE THAT HAS A SUPERIOR MECHANICAL PERFORMANCE, LIGHTNESS, AND ENERGY RETURN, IT DOESN'T CONTRAT OR DEFORM.

FALCON SPEED GREY

EN ISO 20345:2022 CE S3S CI HI HRO SR

EU 39-48 / UK 6-13 / MP 247-315

PROTECTIVE MIDSOLE

DYNEEMA

(PT) Dyneema (ES) Dyneema (FR) Dyneema (DE) Dyneema

PROTECTIVE TOE CAP

FIBERGLASS

(PT) Fibra de Vidro (ES) Fibra de Vidrio (FR) Fibre de Verre
(DE) Glassfaser

SOLE

SUPERNOVA SCF + RUBBER

(PT) Supernova SCF + Borracha (ES) Supernova SCF +
Caucho (FR) Supernova + Nitril (DE) Supernova + Gummi

UPPER RAW MATERIAL

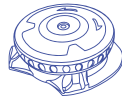
RECYCLED TEXTILE (16%)

(PT) Têxtil Reciclado (ES) Textil Reciclado (FR) Textile Recyclé
(DE) Recyceltes Textiel

LINING MATERIAL

BREATHABLE TEXTILE

(PT) Têxtil Respirável (ES) Textil Respirable (FR) Textile Respirant
(DE) Atmungsaktiv Textil



**QUICK
RELEASE
SYSTEM**



\ 1209.16 \



**QUICK
RELEASE
SYSTEM**



\ 1209.11 \

FALCON SPEED BLUE

EN ISO 20345:2022 CE S3S CI HI HRO SR



\ 1209.06 \

FALCON GREY

EN ISO 20345:2022 CE S3S CI HI HRO SR



\ 1209.04 \

FALCON RED

EN ISO 20345:2022 CE S3S CI HI HRO SR



FALCON OLIVE FL

EN ISO 20345:2022 CE S3S CI HI HRO SR

**FULL
LEATHER**



EU 39-48 / UK 6-13 / MP 247-315

PROTECTIVE MIDSOLE

DYNEEMA

(PT) Dyneema (ES) Dyneema (FR) Dyneema (DE) Dyneema

PROTECTIVE TOE CAP

FIBERGLASS

(PT) Fibra de Vidro (ES) Fibra de Vidrio (FR) Fibre de Verre (DE) Glassfaser

SOLE

SUPERNOVA SCF + RUBBER

(PT) Supernova SCF + Borracha (ES) Supernova SCF + Caucho (FR) Supernova + Nitril (DE) Supernova + Gummi

UPPER RAW MATERIAL

NATURAL SMOOTH LEATHER

(PT) Pele Natural Macia (ES) Piel Natural Macia (FR) Cuir Souple Naturel (DE) Natürliches Weiches Leder

LINING MATERIAL

LEATHER

(PT) Pele (ES) Piel (FR) Cuir (DE) Leder



\ 1220.08 \



**QUICK
RELEASE
SYSTEM**



\ 1209.26 \

FALCON SPEED BLACKOUT

EN ISO 20345:2022 CE S3S CI HI HRO SR



**QUICK
RELEASE
SYSTEM**



\ 1009.26 \

CRUZADER SPEED BLACKOUT

EN ISO 20345:2022 CE S3S CI HI HRO SR

UPPER RAW MATERIAL

WR HI-TECH MFN

(PT) Tecnologia MFN (ES) Tecnología MFN (FR) Technologie MFN (DE) MFN Technologie

LINING MATERIAL

BREATHABLE TEXTILE

(PT) Têxtil Respirável (ES) Textil Respirable (FR) Textile Respirant (DE) Atmungsaktiv Textil



SPACE ODDITY collection



STARGATE BLACK

EN ISO 20345:2022 CE S2 PL SR



EU 35-48 / UK 2¹/₂-13 / MP 217-315

PROTECTIVE MIDSOLE

KEVLAR

(PT) Kevlar (ES) Kevlar (FR) Kevlar (DE) Kevlar

PROTECTIVE TOE CAP

COMPOSITE

(PT) Composite (ES) Composite (FR) Composite (DE)

Kunststoffkappe

SOLE

TPU + EVA PHYLON

(PT) TPU + Eva Phylon (ES) TPU + Eva Phylon (FR) TPU +

Eva Phylon (DE) TPU + Eva Phylon

UPPER RAW MATERIAL

HI-TECH TEXTILE

(PT) Têxtil Hi-Tech (ES) Textil Hi-Tech (FR) Textile Hi-Tech

(DE) High-Tech Textiel

LINING MATERIAL

BREATHABLE TEXTILE

(PT) Têxtil Respirável (ES) Textil Respirable (FR) Textile Respi-

rant (DE) Atmungsaktiv Textil



EXTRA CUSHIONING



STARDUST BLUE

EN ISO 20345:2011 CE S1 P WRU SRC

EU 33-47 / UK 1-12 / MP 202-307

PROTECTIVE MIDSOLE

KEVLAR

(PT) Kevlar (ES) Kevlar (FR) Kevlar (DE) Kevlar

PROTECTIVE TOE CAP

COMPOSITE

(PT) Composite (ES) Composite (FR) Composite (DE)

Kunststoffkappe

SOLE

TPU + EVA PHYLON

(PT) TPU + Eva Phylon (ES) TPU + Eva Phylon (FR) TPU +

Eva Phylon (DE) TPU + Eva Phylon

UPPER RAW MATERIAL

WR BREATHABLE HI-TECH MF

(PT) Tecnologia MF (ES) Tecnología MF (FR) Technologie MF

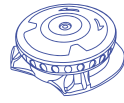
(DE) MF Technologie

LINING MATERIAL

DRYLEX TEXTILE

(PT) Têxtil Drylex (ES) Textil Drylex (FR) Textile Drylex (DE)

Drylex Textil



QUICK
RELEASE
SYSTEM



\ 1200.10 \



SANDAL // EXTRA BREATHABLE



QUICK
RELEASE
SYSTEM



\ 1400.10 \

STARSIGHT BLUE

EN ISO 20345:2011 CE S1 P SRC

EU 35-47 / UK 2^{1/2}-12 / MP 227-307



\ 1200.00 \

STARLIGHT BLUE

EN ISO 20345: 2011 CE S1 P WRU SRC



ESD
ELECTROSTATIC DISCHARGE



VEGAN
FRIENDLY



METAL
FREE



ENERGY RETURN
TECHNOLOGY



FLEXIBLE



LIGHTWEIGHT

COUNTRYSIDE

collection



GLADE BLUE

EN ISO 20345:2011 CE S3 HI CI SRC

EU 36-48 / UK 3-13 / MP 225-315

PROTECTIVE MIDSOLE

KEVLAR

(PT) Kevlar (ES) Kevlar (FR) Kevlar (DE) Kevlar

PROTECTIVE TOE CAP

FIBERGLASS

(PT) Fibra de Vidro (ES) Fibra de Vidrio (FR) Fibre de Verre
(DE) Glassfaser

SOLE

DOUBLE DENSITY PU

(PT) Dupla Densidade PU (ES) Doble Densidade PU (FR)
Double Densité PU (DE) Zweikomponenten PU

UPPER RAW MATERIAL

WR BREATHABLE HI-TECH MF

(PT) Tecnologia MF (ES) Tecnología MF (FR) Technologie MF
(DE) MF Technologie

LINING MATERIAL

BREATHABLE TEXTILE

(PT) Têxtil Respirável (ES) Textil Respirable (FR) Textile
Respirant (DE) Atmungsaktiv



\ 1227.01 \



QUICK
RELEASE
SYSTEM



\ 1227.16 \

GLADE SPEED GREY

EN ISO 20345:2011 CE S3 HI CI SRC

EU 39-48 / UK 6-13 / MP 247-315



\ 1227.08 \

GLADE GREEN

EN ISO 20345:2011 CE S3 HI CI SRC



MEADOW BLUE

EN ISO 20345:2011 **CE S3 HI CI SRC**



EU 36-48 / UK 3-13 / MP 225-315

PROTECTIVE MIDSOLE

KEVLAR

(PT) Kevlar (ES) Kevlar (FR) Kevlar (DE) Kevlar

PROTECTIVE TOE CAP

FIBERGLASS

(PT) Fibra de Vidro (ES) Fibra de Vidrio (FR) Fibre de Verre (DE) Glassfaser

SOLE

DOUBLE DENSITY PU

(PT) Dupla Densidade PU (ES) Doble Densidade PU (FR) Double Densité PU (DE) Zweikomponenten PU

UPPER RAW MATERIAL

WR BREATHABLE HI-TECH MF

(PT) Tecnologia MF (ES) Tecnologia MF (FR) Technologie MF (DE) MF Technologie

LINING MATERIAL

BREATHABLE TEXTILE

(PT) Têxtil Respirável (ES) Textil Respirable (FR) Textile Respirant (DE) Atmungsaktiv



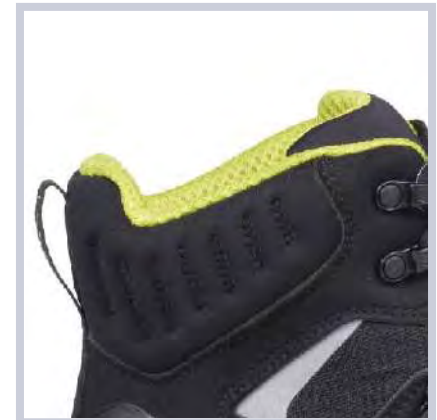
MEADOW SPEED GREY

EN ISO 20345:2011 **CE S3 CI HI SRC**



MEADOW GREEN

EN ISO 20345:2011 **CE S3 HI CI SRC**



CANYON BLACK
EN ISO 20345:2011 CE S3 HI CI SRC

EU 36-48 / UK 3-13 / MP 225-315

PROTECTIVE MIDSOLE

KEVLAR

(PT) Kevlar (ES) Kevlar (FR) Kevlar (DE) Kevlar

PROTECTIVE TOE CAP

FIBERGLASS

(PT) Fibra de Vidro (ES) Fibra de Vidrio (FR) Fibre de Verre
(DE) Glassfaser

SOLE

DOUBLE DENSITY PU

(PT) Dupla Densidade PU (ES) Doble Densidade PU (FR)
Double Densité PU (DE) Zweikomponenten PU

UPPER RAW MATERIAL

NUBUCK LEATHER

(PT) Pele Nubuck (ES) Cuero Nobuck (FR) Cuir Nubuck (DE)
Zchwartz Nubuckleer

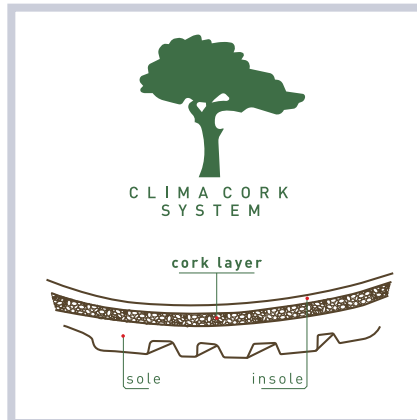
LINING MATERIAL

DRYLEX TEXTILE

(PT) Têxtil Drylex (ES) Textil Drylex (FR) Textile Drylex (DE)
Drylex Textil



\ 1025.00 \



\ 1225.00 \

JASPER
EN ISO 20345:2011 CE S3 HI CI SRC



SNOWMASS

EN ISO 20345:2011 CE S3 WR HI CI SRC



Available with metatarsal protection.
Ref. 1025.20



\ 1025.10 \

EU 36-48 / UK 3-13 / MP 225-315

PROTECTIVE MIDSOLE

KEVLAR

(PT) Kevlar (ES) Kevlar (FR) Kevlar (DE) Kevlar

PROTECTIVE TOE CAP

FIBERGLASS

(PT) Fibra de Vidro (ES) Fibra de Vidrio (FR) Fibre de Verre
(DE) Glassfaser

SOLE

DOUBLE DENSITY PU

(PT) Dupla Densidade PU (ES) Doble Densidade PU (FR)
Double Densité PU (DE) Zweikomponenten PU

UPPER RAW MATERIAL

NUBUCK LEATHER

(PT) Pele Nubuck (ES) Cuero Nobuck (FR) Cuir Nubuck (DE)
Schwartz Nubuckleer

LINING MATERIAL

AQUATEX WATERPROOF MEMBRANE

(PT) Membrana Impermeável Aquatex (ES) Membrana
Impermeable Aquatex (FR) Membrane Impermeable Aquatex
(DE) Aquatex Waserdichte Membrane



\ 1025.25 \



YELLOWSTONE M

EN ISO 20345:2011 CE S3 HI CI WR SRC M

METATARSAL PROTECTION



CLIMA CORK
SYSTEM



FLEXIBLE



LIGHTWEIGHT



Aquatex
WATERPROOF



ANTISTATIC



METAL FREE

YOSEMITE

EN ISO 20345:2011 CE S3 HI CI SRC

EU 39-48 / UK 6-13 / MP 247-315

PROTECTIVE MIDSOLE

KEVLAR

(PT) Kevlar (ES) Kevlar (FR) Kevlar (DE) Kevlar

PROTECTIVE TOE CAP

FIBERGLASS

(PT) Fibra de Vidro (ES) Fibra de Vidrio (FR) Fibre de Verre
(DE) Glassfaser

SOLE

DOUBLE DENSITY PU

(PT) Dupla Densidade PU (ES) Doble Densidade PU (FR)
Double Densité PU (DE) Zweikomponenten PU

UPPER RAW MATERIAL

WR FLOATER COGNAC

(PT) WR Floater Cognac (ES) Coñac Floater WR (FR) Cuir
Plein Fleur WR Cognac (DE) WR Floater Cognac

LINING MATERIAL

BREATHABLE DRYLEX TEXTILE

(PT) Têxtil Dry-Tex (ES) Textil Dry-Tex (FR) Textile Dry-Tex
(DE) Dry-Tex Textil



\ 1226.42 \



\ 1674.62 \



APALACHE

EN ISO 20345: 2011 CE WR S3 HI CI SRC



FIORDLAND

EN ISO 20345:2011 CE S3 HI CI SRC



**QUICK
RELEASE
SYSTEM**



\ 1025.35 \



NATURAL
LAMBSKIN



RESISTANT
UP TO -30°C



CLIMA CORK
SYSTEM

EU 36-48 / UK 3-13 / MP 225-315

PROTECTIVE MIDSOLE

KEVLAR

(PT) Kevlar (ES) Kevlar (FR) Kevlar (DE) Kevlar

PROTECTIVE TOE CAP

FIBERGLASS

(PT) Fibra de Vidro (ES) Fibra de Vidrio (FR) Fibre de Verre
(DE) Glassfaser

SOLE

DOUBLE DENSITY PU

(PT) Dupla Densidade PU (ES) Doble Densidade PU (FR)
Double Densité PU (DE) Zweikomponenten PU

UPPER RAW MATERIAL

NUBUCK LEATHER

(PT) Pele Nubuck (ES) Cuero Nobuck (FR) Cuir Nubuck (DE)
Schwartz Nubuckleer

LINING MATERIAL

NATURAL LAMBSKIN

(PT) Pele Natural de Carneiro (ES) Piel de Cordero Natural
(FR) Peau de Mouton Naturelle (DE) Natürliches Lamm Futter



VERY HIGH QUALITY



ANTISTATIC



AQUATEX
WATERPROOF

EU 36-47 / UK 3-12 / MP 225-307

PROTECTIVE MIDSOLE

KEVLAR

(PT) Kevlar (ES) Kevlar (FR) Kevlar (DE) Kevlar

PROTECTIVE TOE CAP

-

SOLE

DOUBLE DENSITY PU

(PT) Dupla Densidade PU (ES) Doble Densidade PU (FR)
Double Densité PU (DE) Zweikomponenten PU

UPPER RAW MATERIAL

NUBUCK LEATHER

(PT) Pele Nubuck (ES) Cuero Nobuck (FR) Cuir Nubuck (DE)
Schwartz Nubuckleer

LINING MATERIAL

AQUATEX WATERPROOF MEMBRANE

(PT) Membrana Impermeável Aquatex (ES) Membrana
Impermeable Aquatex (FR) Membrane Impermeable Aquatex
(DE) Aquatex Wasserdichte Membrane



\ 1025.12 \

PRADO

EN ISO 20347:2011 CE 03 HI CI SRC



CLIMA CORK
SYSTEM



LIGHTWEIGHT



METAL FREE

CASCADES BROWN 23

EN ISO 20345:2022 CE S7L CI HI HRO SC SR

EU 39-47 / UK 6-12 / MP 247-307

PROTECTIVE MIDSOLE

KEVLAR

(PT) Kevlar (ES) Kevlar (FR) Kevlar (DE) Kevlar

PROTECTIVE TOE CAP

FIBERGLASS

(PT) Fibra de Vidro (ES) Fibra de Vidrio (FR) Fibre de Verre
(DE) Glassfaser

SOLE

DIRECT INJECTED PU + VIBRAM

(PT) PU Diretamente Injetado + Vibram (ES) PU Inyectado
+ Vibram (FR) PU Injecté Directement + Vibram (DE) Direkt
Eingespritztes PU + Vibram

UPPER RAW MATERIAL

CRAZY HORSE LEATHER

(PT) Pele Crazy Horse (ES) Cuero Crazy Horse (FR) Cuir
Crazy Horse (DE) Crazy Horse Leder

LINING MATERIAL

SYMPATEX WATERPROOF MEMBRANE

(PT) Membrana Impermeável Sympatex (ES) Membrana
Imperable Sympatex (FR) Membrane Impermeable Sympatex
(DE) Sympatex Wasserdichte



\ 1024.32 \



CASCADES GREY 23

EN ISO 20345:2011 CE S7L HI CI HRO SC SR

\ 1024.36 \





JABBA

EN ISO 20345:2011 CE S3 SRC

EU 35-48 / UK 2^{1/2}-13 / MP 217-315

PROTECTIVE MIDSOLE

KEVLAR

(PT) Kevlar (ES) Kevlar (FR) Kevlar (DE) Kevlar

PROTECTIVE TOE CAP

COMPOSITE

(PT) Composite (ES) Composite (FR) Composite (DE)

Kunststoffkappe

SOLE

DOUBLE DENSITY PU

(PT) Dupla Densidade PU (ES) Doble Densidade PU (FR)

Double Densité PU (DE) Zweikomponenten PU

UPPER RAW MATERIAL

K3D TEXTILE

(PT) Têxtil K3D (ES) Têxtil K3D (FR) Textile K3D

(DE) K3D Textil

LINING MATERIAL

BREATHABLE DRYLEX TEXTILE

(PT) Têxtil Dry-Tex (ES) Textil Dry-Tex (FR) Textile Dry-Tex

(DE) Dry-Tex Textil



\ 1203.06 \



\ 1203.11 \



BETTER FITTING

CHEWIE 22

EN ISO 20345:2011 CE S3 SRC



YODA TAUPE FL

EN ISO 20345:2022 CE S3L HI CI HRO FO SR



**FULL
LEATHER**



EU 35-48 / UK 2^{1/2}-13 / MP 217-315

PROTECTIVE MIDSOLE

KEVLAR

(PT) Kevlar (ES) Kevlar (FR) Kevlar (DE) Kevlar

PROTECTIVE TOE CAP

COMPOSITE

(PT) Composite (ES) Composite (FR) Composite (DE)

Kunststoffkappe

SOLE

DIRECT INJECTED PU + RUBBER

(PT) PU Diretamente Injetado + Borracha (ES) PU Inyectado

+ Caucho (FR) PU Injecté Directement + Nitril (DE) Direkt

Eingespritztes PU + Gummi

UPPER RAW MATERIAL

NATURAL SMOOTH LEATHER

(PT) Pele Natural Macia (ES) Piel Natural Macia (FR) Cuir

Souple Naturel (DE) Natürliches Weiches Leder

LINING MATERIAL

LEATHER

(PT) Pele (ES) Piel (FR) Cuir (DE) Leder

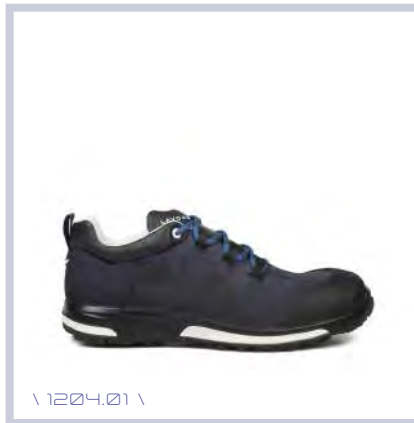
\ 1204.12 \



\ 1004.12 \

LANDO TAUPE FL

EN ISO 20345:2022 CE S3L CI HI HRO FO SR



\ 1204.01 \

YODA BLUE FL

EN ISO 20345:2022 CE S3L HI CI HRO FO SR



\ 1004.01 \

LANDO BLUE FL

EN ISO 20345:2022 CE S3L HI CI HRO FO SR



CLIMA CORK
SYSTEM



RESISTANT
UP TO 300°C



ESD
(Electro-Static Discharge)



FLEXIBLE



METAL FREE



VERY HIGH QUALITY

YODA BROWN

EN ISO 20345:2022 CE S3L CI HI HRO FO SR

EU 35-48 / UK 2 1/2-13 / MP 217-315

PROTECTIVE MIDSOLE

KEVLAR

(PT) Kevlar (ES) Kevlar (FR) Kevlar (DE) Kevlar

PROTECTIVE TOE CAP

COMPOSITE

(PT) Composite (ES) Composite (FR) Composite (DE)

Kunststoffkappe

SOLE

DIRECT INJECTED PU + RUBBER

(PT) PU Diretamente Injetado + Borracha (ES) PU Inyectado

+ Caucho (FR) PU Injecté Directement + Nitril (DE) Direkt

Eingespritztes PU + Gummi

UPPER RAW MATERIAL

NUBUCK LEATHER

(PT) Pele Nubuck WR (ES) Cuero Nubuck (FR) Cuir Nobuck

WR (DE) Nubuck Leder WR

LINING MATERIAL

DRYLEX TEXTILE

(PT) Têxtil Drylex (ES) Textil Drylex (FR) Textile Drylex (DE)

Drylex Textil



LANDO BROWN

EN ISO 20345:2022 CE S3L HI CI HRO FO SR



VADER BLACK

EN ISO 20345:2022 **CE S3L HI CI HRO FO SR**

EU 35-48 / UK 2^{1/2}-13 / MP 217-315

PROTECTIVE MIDSOLE

KEVLAR

(PT) Kevlar (ES) Kevlar (FR) Kevlar (DE) Kevlar

PROTECTIVE TOE CAP

COMPOSITE

(PT) Composite (ES) Composite (FR) Composite (DE)

Kunststoffkappe

SOLE

DIRECT INJECTED PU + RUBBER

(PT) PU Diretamente Injetado + Borracha (ES) PU Inyectado

+ Caucho (FR) PU Injecté Directement + Nitril (DE) Direkt

Eingespritztes PU + Gummi

UPPER RAW MATERIAL

FULL GRAIN LEATHER

(PT) Pele de Flor Integral (ES) Cuero Full Grain (FR) Cuir Plein

Fleur Grainé (DE) Glattleder

LINING MATERIAL

VADICONFORT TEXTILE

(PT) Têxtil Vadiconfort (ES) Textil Vadiconfort (FR) Textile

Vadiconfort (DE) Textil Vadiconfort



\ 1204.00 \

KENOBI BLACK

EN ISO 20345:2022 **CE S3L HI CI HRO FO SR**



\ 1004.00 \





SUSTAINABLE PRODUCTS

Incorporating 97% upper recycled material and 15% reusable cork.

Ongoing commitment to sustainability and environmental preservation.

By reusing materials, we are not only reducing waste but also promoting a circular economy, where materials are continuously repurposed and recycled.

We are contributing to a greener and sustainable future.



15% CORK IN SOLE

97% RECYCLED TEXTILE



LYNX EARTH

EN ISO 20345:2022 **CE HI CI FO SR**



\ 1257.06 \

EU 35-48 / UK 2^{1/2}-13 / MP 217-315

PROTECTIVE MIDSOLE

KEVLAR

(PT) Kevlar (ES) Kevlar (FR) Kevlar (DE) Kevlar

PROTECTIVE TOE CAP

COMPOSITE

(PT) Composite (ES) Composite (FR) Composite (DE) Kunststoffkappe

SOLE

DOUBLE DENSITY PU W/ 15% CORK

(PT) Dupla Densidade PU + Cortiça (ES) Doble Densidade PU + Corcho (FR) Doble Densité PU (DE) Zweikomponenten PU

UPPER RAW MATERIAL

RECYCLED TEXTILE (97%)

(PT) Têxtil Reciclado (ES) Textil Reciclado (FR) Textile Recyclé (DE) Recyceltes Textil

LINING MATERIAL

RECYCLED TEXTILE

(PT) Têxtil Reciclado (ES) Textil Reciclado (FR) Textile Recyclé (DE) Recyceltes Textil

SOLE

DOUBLE DENSITY PU

(PT) PU Diretamente Injetado (ES) PU Inyectado (FR) PU Injecté Directement (DE) Direkt Eingespritztes PU

UPPER RAW MATERIAL

VHR TEXTILE

(PT) Têxtil VHR (ES) Textil (FR) Textile VHR (DE) VHR Textil

LINING MATERIAL

BREATHABLE TEXTILE

(PT) Têxtil Respirável (ES) Textil Respirable (FR) Textile Respirant (DE) Atmungsaktiv



\ 1257.10 \

LYNX ICE

EN ISO 20345:2011 **CE S3 SRC**



ESD
(Electrostatic Discharge)



FLEXIBLE



LIGHTWEIGHT



METAL FREE

LYNX BLACK

EN ISO 20345:2011 CE S3 SRC

EU 35-48 / UK 2 1/2-13 / MP 217-315

PROTECTIVE MIDSOLE

KEVLAR

(PT) Kevlar (ES) Kevlar (FR) Kevlar (DE) Kevlar

PROTECTIVE TOE CAP

COMPOSITE

(PT) Composite (ES) Composite (FR) Composite (DE)

Kunststoffkappe

SOLE

DOUBLE DENSITY PU

(PT) Dupla Densidade PU (ES) Doble Densidade PU (FR)

Double Densité PU (DE) Zweikomponenten PU

UPPER RAW MATERIAL

WR BREATHABLE HI-TECH

(PT) Tecnologia MF (ES) Tecnología MF (FR) MF Technologie

(DE) MF Technologie

LINING MATERIAL

BREATHABLE TEXTILE

(PT) Têxtil Respirável (ES) Textil Respirable (FR) Textile

Respirant (DE) Atmungsaktiv



\ 1257.50 \



\ 1057.50 \

DRAGON BLACK

EN ISO 20345:2011 CE S3 SRC



\ 1257.51 \

LYNX BLUE

EN ISO 20345:2011 CE S3 SRC



\ 1257.61 \

ARA

EN ISO 20345:2011 CE S1P SRC





FOOD INDUSTRY

VAGOS

EN ISO 20345:2022 CE S2 SR

EU 34-48 / UK 2-13 / MP 217-315

PROTECTIVE MIDSOLE

-

PROTECTIVE TOE CAP

COMPOSITE

(PT) Composite (ES) Composite (FR) Composite (DE)
Kunststoffkappe

SOLE

DOUBLE DENSITY PU

(PT) Dupla Densidade PU (ES) Doble Densidade PU
(FR) Double Densité PU (DE) Zweikomponenten PU

UPPER RAW MATERIAL

VEGAN MICROFIBER

(PT) Microfibras Vegan (ES) Microfibras Vegan (FR) Microfibras
Vegan (DE) Mikrofaser Vegan

LINING MATERIAL

DRYLEX TEXTILE

(PT) Têxtil Drylex (ES) Textil Drylex (FR) Textile Drylex (DE)
Drylex Textil



TOCHA 22

EN ISO 20345:2011 CE S3 SRC



VADER XXL

EN ISO 20345:2011 **CE S3 SRC**

EU 49-53 / UK 14-17 / MP 322-352



PROTECTIVE MIDSOLE

KEVLAR

(PT) Kevlar (ES) Kevlar (FR) Kevlar (DE) Kevlar

PROTECTIVE TOE CAP

COMPOSITE

(PT) Composite (ES) Composite (FR) Composite (DE)

Kunststoffkappe

SOLE

DOUBLE DENSITY PU

(PT) Dupla Densidade PU (ES) PU Doble Densidade PU

(FR) Double Densité PU (DE) Zweikomponenten PU

UPPER RAW MATERIAL

FULL GRAIN LEATHER

(PT) Pele de Flor Integral (ES) Cuero Full Grain (FR) Cuir Plein

Fleur Grainé (DE) Glattleder

LINING MATERIAL

DRYLEX TEXTILE

(PT) Têxtil Drylex (ES) Textil Drylex (FR) Textile Drylex (DE)

Drylex Textil

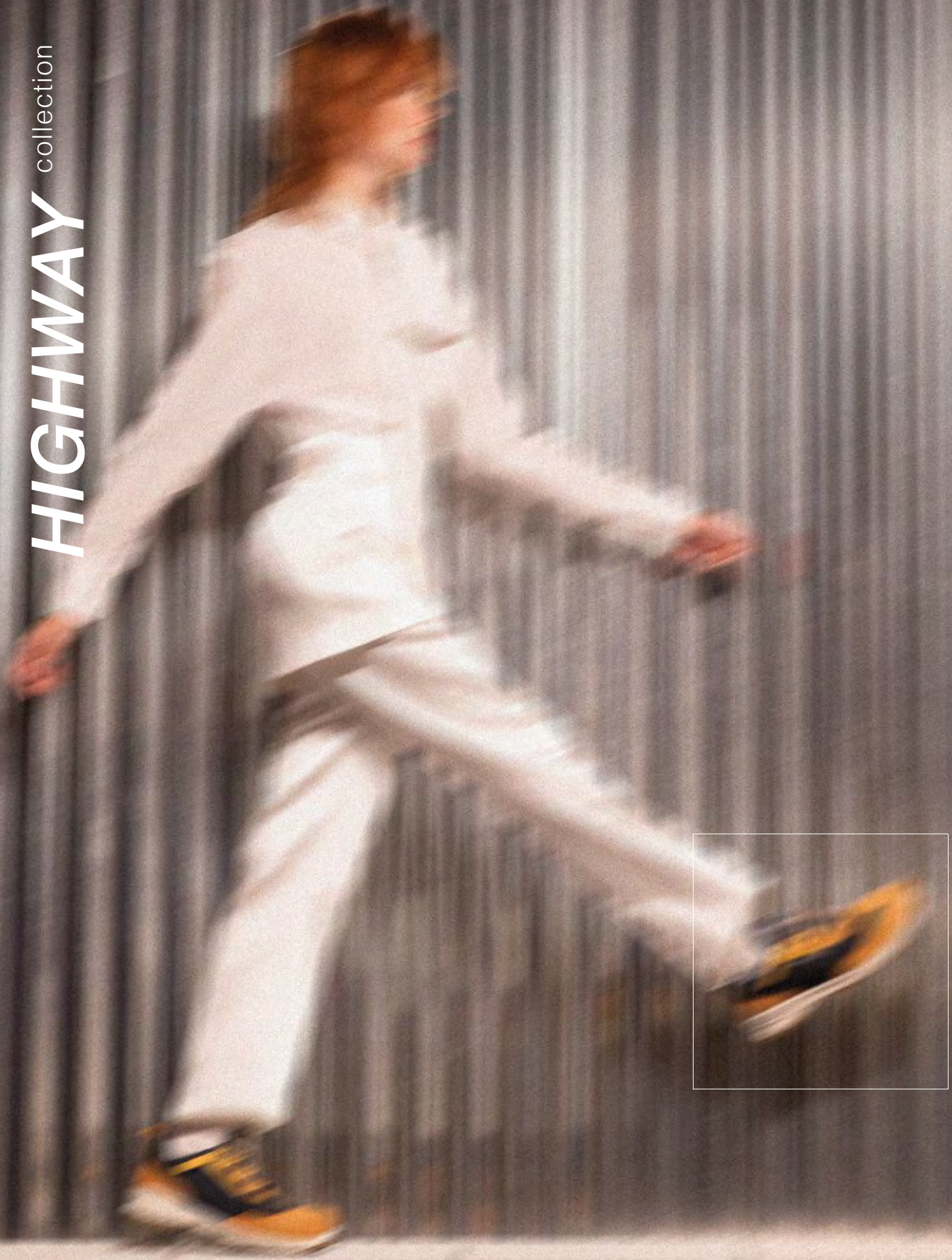
KENOBI XXL

EN ISO 20345:2011 **CE S3 SRC**

XXL
49 - 53



HIGHWAY collection



E04

EN ISO 20345: 2022/A1:2024 **S3S HI CI HRO FO SR**



EU 35-48 / UK 2^{1/2}-13 / MP 217-315

PROTECTIVE MIDSOLE

KEVLAR

(PT) Kevlar (ES) Kevlar (FR) Kevlar (DE) Kevlar

PROTECTIVE TOE CAP

FIBERGLASS

(PT) Fibra de Vidro (ES) Fibra de Vidrio (FR) Fibre de Verre

(DE) Glassfaser

SOLE

DIRECT INJECTED PU + RUBBER

(PT) PU Diretamente Injetado + Borracha (ES) PU Inyectado

+ Caucho (FR) PU Injecté Directement + Nitril (DE) Direkt

Eingespritztes PU + Gummi

UPPER RAW MATERIAL

NUBUCK LEATHER + TEXTILE

(PT) Pele Nubuck + Têxtil (ES) Cuero Nobuck + Textil (FR)

Cuir Nubuck + Textile (DE) Nubuckleder + Textil

LINING MATERIAL

DRYLEX TEXTILE

(PT) Têxtil Drylex (ES) Textil Drylex (FR) Textile Drylex (DE)

Drylex Textil



E14

EN ISO 20345:2022/A1:2024 **S3S HI CI HRO FO SR**



E04

EN ISO 20345:2022/A1:2024 **S3S HI CI HRO FO SR**



E14

EN ISO 20345:2022/A1:2024 **S3S HI CI HRO FO SR**



E02

EN ISO 20345:2011 **CE S3 HRO SRC**

EU 35-48 / UK 2 1/2-13 / MP 217-315

PROTECTIVE MIDSOLE

KEVLAR

(PT) Kevlar (ES) Kevlar (FR) Kevlar (DE) Kevlar

PROTECTIVE TOE CAP

STEEL

(PT) Aço (ES) Acero (FR) Acier (DE) Stahlkappe

SOLE

DIRECT INJECTED PU + RUBBER

(PT) PU Diretamente Injetado + Borracha (ES) PU Inyectado

+ Caucho (FR) PU Injecté Directement + Nitril (DE) Direkt

Eingespritztes PU + Gummi

UPPER RAW MATERIAL

NUBUCK LEATHER

(PT) Pele Nubuck (ES) Cuero Nobuck (FR) Cuir Nubuck (DE)

Nubuckleder

LINING MATERIAL

BREATHABLE TEXTILE

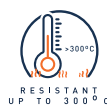
(PT) Têxtil Respirável (ES) Textil Respirable (FR) Textile Respi-

rant (DE) Atmungsaktiv Textil



E 10 BLACK

EN ISO 20345:2011 **CE S3 HRO SRC**



E 16 HONEY

EN ISO 20345:2011 CE S3 HRO SRC



EU 35-48 / UK 2^{1/2}-13 / MP 217-315

PROTECTIVE MIDSOLE

KEVLAR

(PT) Kevlar (ES) Kevlar (FR) Kevlar (DE) Kevlar

PROTECTIVE TOE CAP

STEEL

(PT) Aço (ES) Acero (FR) Acier (DE) Stahlkappe

SOLE

DIRECT INJECTED PU + RUBBER

(PT) PU Diretamente Injetado + Borracha (ES) PU Inyectado + Caucho (FR) PU Injecté Directement + Nitril (DE) Direkt Eingespritztes PU + Gummi

UPPER RAW MATERIAL

NUBUCK LEATHER

(PT) Pele Nubuck (ES) Cuero Nobuck (FR) Cuir Nubuck (DE) Nubuckleder

LINING MATERIAL

BREATHABLE TEXTILE

(PT) Têxtil Respirável (ES) Textil Respirable (FR) Textile Respirant (DE) Atmungsaktiv Textil

\ 1084.36 \



\ 1084.22 \

E 17 BROWN

EN ISO 20345:2011 CE S3 HRO SRC



\ 1084.21 \

E 18 BLUE

EN ISO 20345:2011 CE S3 HRO SRC



\ 1058.00 \

E 22

EN ISO 20345:2011 CE S3 HRO SRC



CLIMA CORK
SYSTEM



ESD
(ELECTROSTATIC DISCHARGE)



RESISTANT
UP TO 300°C



ANTI-SLIP
SOLE



WATER
REPELLENT UPPER



VERY HIGH QUALITY

E 82

EN ISO 20345:2011 CE S3 HRO SRC

EU 35-48 / UK 2½-13 / MP 217-315

PROTECTIVE MIDSOLE

KEVLAR

(PT) Kevlar (ES) Kevlar (FR) Kevlar (DE) Kevlar

PROTECTIVE TOE CAP

STEEL

(PT) Aço (ES) Acero (FR) Acier (DE) Stahlkappe

SOLE

DIRECT INJECTED PU + RUBBER

(PT) PU Diretamente Injetado + Borracha (ES) PU Inyectado + Caucho (FR) PU Injecté Directement + Nitril (DE) Direkt Eingespritztes PU + Gummi

UPPER RAW MATERIAL

WR FLOATER COGNAC

(PT) WR Floater Cognac (ES) Coñaaac Floater WR (FR) Cuir Plein Fleur WR Cognac (DE) WR Floater Cognac

LINING MATERIAL

BREATHABLE TEXTILE

(PT) Têxtil Respirável (ES) Textil Respirable (FR) Textile Respirant (DE) Atmungsaktiv Textil



\ 1084.42 \



\ 1684.42 \

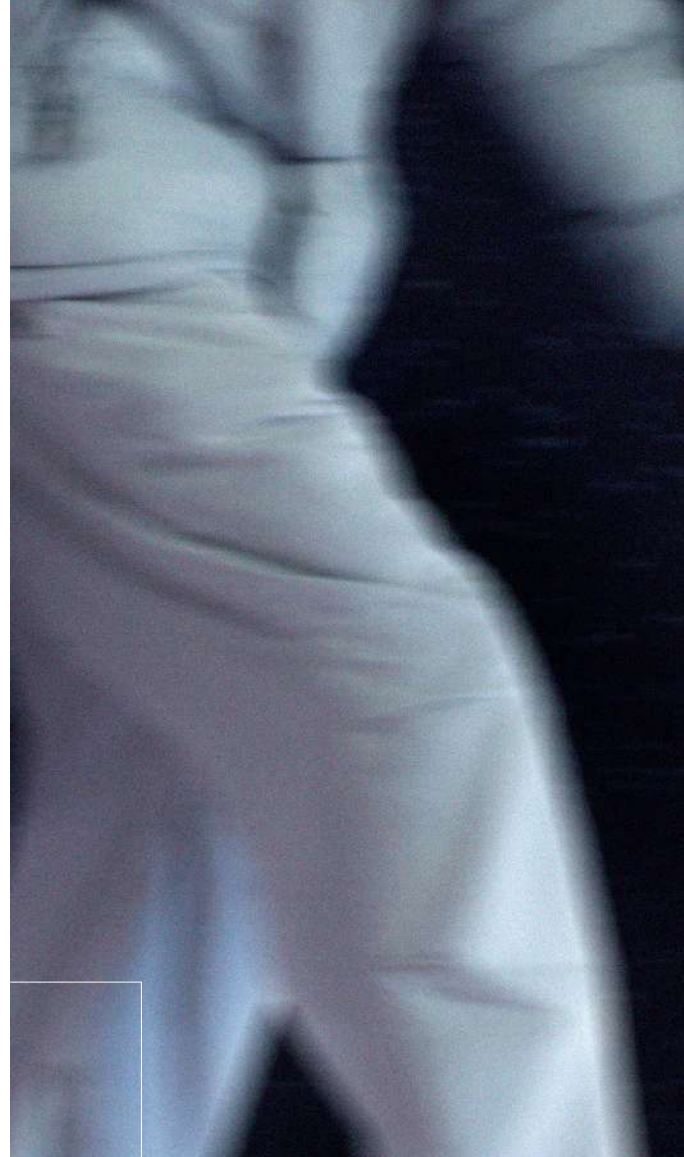


E 802

EN ISO 20345:2011 CE S3 HRO SRC



ENERGY collection



HYBRID BLUE

EN ISO 20345:2011 CE S3 SRC

EU 35-48 / UK 2½-13 / MP 217-315

PROTECTIVE MIDSOLE

KEVLAR

(PT) Kevlar (ES) Kevlar (FR) Kevlar (DE) Kevlar

PROTECTIVE TOE CAP

COMPOSITE

(PT) Composite (ES) Composite (FR) Composite (DE)

Kunststoffkappe

SOLE

DIRECT INJECTED PU + TPU

(PT) PU Diretamente Injetado + TPU (ES) PU Inyectado + TPU (FR) PU Injecté Directement + TPU (DE) Direkt Eingepritztes PU + TPU

UPPER RAW MATERIAL

LASER HD WR TEXTILE

(PT) Têxtil Laser HD WR (ES) Textil Laser HD WR (FR) Textile

Laser HD WR (DE) WR Floater Cognac

LINING MATERIAL

BREATHABLE TEXTILE

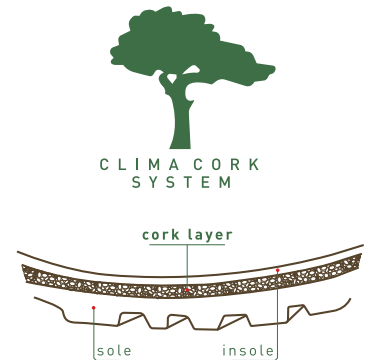
(PT) Têxtil Respirável (ES) Textil Respirable (FR) Textile Respirant (DE) Atmungsaktiv Textil



\ 1263.11 \



\ 1684.42 \



HYBRID RED

EN ISO 20345:2011 CE S3 SRC



SOLAR

EN ISO 20345:2011 CE S1P SRC



EU 36-48 / UK 3-13 / MP 225-315

PROTECTIVE MIDSOLE

KEVLAR

(PT) Kevlar (ES) Kevlar (FR) Kevlar (DE) Kevlar

PROTECTIVE TOE CAP

COMPOSITE

(PT) Composite (ES) Composite (FR) Composite (DE)

Kunststoffkappe

SOLE

DIRECT INJECTED PU + TPU

(PT) PU Diretamente Injetado + TPU (ES) PU Inyectado

Directo + TPU (FR) PU Injecté Directement + TPU (DE)

Direkt Eingespritztes PU + TPU

UPPER RAW MATERIAL

SUEDE LEATHER

(PT) Couro Acamurçado (ES) Cuero de Gamuza (FR) Croute

Velours (DE) Suede Leder

LINING MATERIAL

BREATHABLE TEXTILE

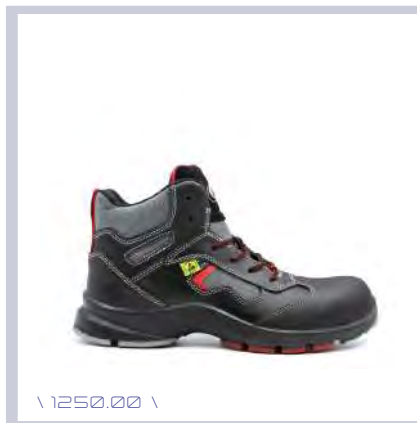
(PT) Têxtil Respirável (ES) Textil Respirable (FR) Textile Respi-

rant (DE) Atmungsaktiv Textil



TIDAL

EN ISO 20345:2011 CE S1P SRC



BIOMASS

EN ISO 20345:2011 CE S3 SRC

UPPER RAW MATERIAL

LEATHER + TEXTILE

(PT) Pele + Têxtil (ES) Piel + Textil (FR) Cuir + Textile (DE)

Leder + Textil



ESD
(Electrostatic Dispersive)



WATER
REPELLENT UPPER



LIGHTWEIGHT



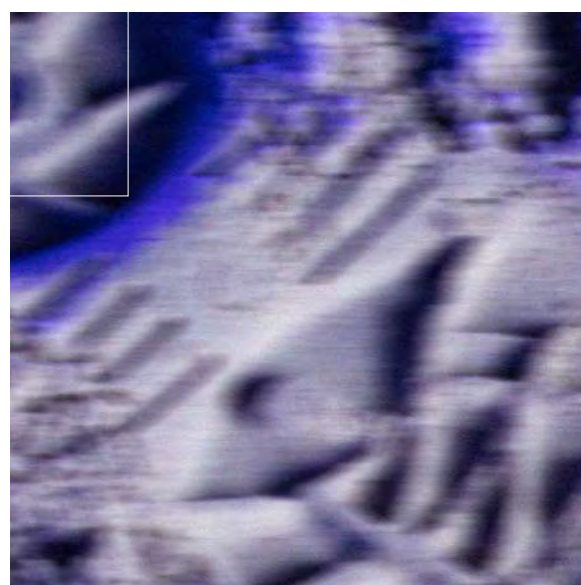
ANTI-SLIP
SOLE



METAL FREE

CUP collection

42



JAMOR

EN ISO 20345:2022 CE S3L HI CI FO SR



EU 36-47 / UK 3-12 / MP 225-307

PROTECTIVE MIDSOLE

KEVLAR

(PT) Kevlar (ES) Kevlar (FR) Kevlar (DE) Kevlar

PROTECTIVE TOE CAP

STEEL

(PT) Aço (ES) Acero (FR) Acier (DE) Stahlkappe

SOLE

DOUBLE DENSITY PU

(PT) Dupla Densidade PU (ES) Doble Densidade PU (FR)

Double Densité PU (DE) Zweikomponenten PU

UPPER RAW MATERIAL

MATRIX KEVLAR + ANILINE LEATHER

(PT) Matrix Kevlar + Pele Anilina (ES) Matrix Kevlar + Cuero

Anilina (FR) Matrix Kevlar + Aniline Leder (DE) Matrix Kevlar + Aniline Leder

LINING MATERIAL

BREATHABLE TEXTILE

(PT) Têxtil Respirável (ES) Textil Respirable (FR) Textile Respirant (DE) Atmungsaktiv Textil

\ 1237.00 \



\ 1238.02 \

TEAM BROWN

EN ISO 20345:2022 CE S3L CI HI FO SR

Designed for multidirectional floors, giving a perfect traction with comfort to your feet



TECHNICAL CONTRIBUTION OF

SPODOS®
FOOT SCIENCE CENTER



HEAVY DUTY collection



EXPLORATION HIGH

EN ISO 20345:2011 **CE S3 SRC**

EU 39-48 / UK 6-13 / MP 247-315



\ 1611.00 \

PROTECTIVE MIDSOLE

STEEL

(PT) Aço (ES) Acero (FR) Acier (DE) Stahlkappe

PROTECTIVE TOE CAP

STEEL

(PT) Aço (ES) Acero (FR) Acier (DE) Stahlkappe

SOLE

DIRECT INJECTED PU

(PT) PU Diretamente Injetado (ES) PU Inyectado Directo

(FR) PU Injecté Directement (DE) Direkt Eingespritztes PU

UPPER RAW MATERIAL

FULL GRAIN LEATHER

(PT) Pele de Flor Integral (ES) Cuero Full Grain (FR) Cuir Plein

Fleur Grainé (DE) Glattleder

LINING MATERIAL

AQUATEX WATERPROOF MEMBRANE

(PT) Membrana Impermeável Aquatex (ES) Membrana

Impermeable Aquatex (FR) Membrane Impermeable Aquatex

(DE) Aquatex Wasserdichte Membrane

EXPLORATION LOW

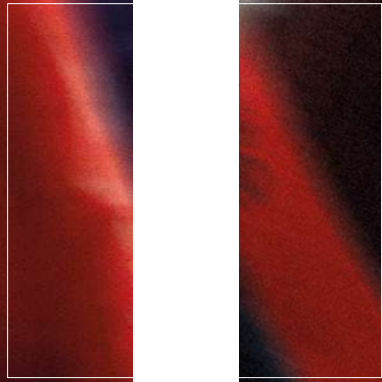
EN ISO 20345:2011 **CE S3 SRC**



\ 1011.00 \



TECH collection



THOR

EN ISO 20345:2011 **CE S3 CI HI WR HRO SRC**



EU 39-47 / UK 6-12 / MP 247-307



\ 1632.02 \

PROTECTIVE MIDSOLE

STEEL

(PT) Aço (ES) Acero (FR) Acier (DE) Stahlkappe

PROTECTIVE TOE CAP

STEEL

(PT) Aço (ES) Acero (FR) Acier (DE) Stahlkappe

SOLE

DIRECT INJECTED PU + VIBRAM

(PT) PU Diretamente Injetado + Vibram (ES) PU Inyectado + Vibram (FR) PU Injecté Directement + Vibram (DE) Direkt Eingespritztes PU + Vibram

UPPER RAW MATERIAL

CRAZY HORSE LEATHER

(PT) Pele Crazy Horse (ES) Cuero Crazy Horse (FR) Cuir Crazy Horse (DE) Crazy Horse Leder

LINING MATERIAL

SYMPATEX WATERPROOF MEMBRANE

(PT) Membrana Impermeável Sympatex (ES) Membrana Impermeable Sympatex (FR) Membrane Impermeable Sympatex (DE) Sympatex Wasserdichte Membrane

ELITE

EN ISO 17249:2013 / AC:2014 **CLASS 2**
EN ISO 20345:2011 **CE S3 CI HI HRO SRC**



EU 39-48 / UK 6-13 / MP 247-315

PROTECTIVE MIDSOLE

STEEL

(PT) Aço (ES) Acero (FR) Acier (DE) Stahlkappe

PROTECTIVE TOE CAP

STEEL

(PT) Aço (ES) Acero (FR) Acier (DE) Stahlkappe

SOLE

DIRECT INJECTED PU + RUBBER

(PT) PU Diretamente Injetado + Borracha (ES) PU Inyectado + Caucho (FR) PU Injecté Directement + Nitril (DE) Direkt Eingespritztes PU + Gummi

UPPER RAW MATERIAL

CRAZY HORSE LEATHER

(PT) Pele Crazy Horse (ES) Cuero Crazy Horse (FR) Cuir Crazy Horse (DE) Crazy Horse Leder

LINING MATERIAL

SYMPATEX WATERPROOF MEMBRANE

(PT) Membrana Impermeável Sympatex (ES) Membrana Impermeable Sympatex (FR) Membrane Impermeable Sympatex (DE) Sympatex Wasserdichte Membrane



\ 1671.02 \



DAINTREE 2.1

EN ISO 17249:2013 / AC:2014 **CLASS 1**
EN ISO 20345:2011 **CE S3 HRO SRC**

EU 39-48 / UK 6-13 / MP 247-315

PROTECTIVE MIDSOLE

STEEL

(PT) Aço (ES) Acero (FR) Acier (DE) Stahlkappe

PROTECTIVE TOE CAP

STEEL

(PT) Aço (ES) Acero (FR) Acier (DE) Stahlkappe

SOLE

DIRECT INJECTED PU + RUBBER

(PT) PU Diretamente Injetado + Borracha (ES) PU Inyectado + Caucho (FR) PU Injecté Directement + Nitril (DE) Direkt Eingespritztes PU + Gummi

UPPER RAW MATERIAL

NUBUCK LEATHER

(PT) Pele Nubuck (ES) Cuero Nubuck (FR) Cuir Nubuck (DE) Nubuck Leder

LINING MATERIAL

BREATHABLE TEXTILE

(PT) Têxtil Respirável (ES) Textil Respirable (FR) Textile Respirant (DE) Atmungsaktiv Textil



\ 1053.90 \

SHERWOOD

EN ISO 17249:2013 / AC:2014 **CLASS 3**
EN ISO 20345:2011 **CE S3 HRO SRA**



\ 1053.60 \



EU 39-48 / UK 6-13 / MP 247-315

PROTECTIVE MIDSOLE

STEEL

(PT) Aço (ES) Acero (FR) Acier (DE) Stahlkappe

PROTECTIVE TOE CAP

STEEL

(PT) Aço (ES) Acero (FR) Acier (DE) Stahlkappe

SOLE

DIRECT INJECTED PU + RUBBER

(PT) PU Diretamente Injetado + Borracha (ES) PU Inyectado + Caucho (FR) PU Injecté Directement + Nitril (DE) Direkt Eingespritztes PU + Gummi

UPPER RAW MATERIAL

CRAZY HORSE LEATHER

(PT) Pele Crazy Horse (ES) Cuero Crazy Horse (FR) Cuir Crazy Horse (DE) Crazy Horse Leder

LINING MATERIAL

SYMPATEX WATERPROOF MEMBRANE

(PT) Membrana Impermeável Sympatex (ES) Membrana Impermeable Sympatex (FR) Membrane Impermeable Sympatex (DE) Sympatex Wasserdichte Membrane



DAINTREE 2.0

EN ISO 17249:2013 / AC:2014 **CLASS 1**
EN ISO 20345:2022 **CE CI HI HRO SRC**



CHAINSAW
PROTECTION



RESISTANT
UP TO 300°C



ANTI-SLIP
SOLE

EU 39-48 / UK 6-13 / MP 247-315



\ 1053.80 \

PROTECTIVE MIDSOLE

STEEL

(PT) Aço (ES) Acero (FR) Acier (DE) Stahlkappe

PROTECTIVE TOE CAP

STEEL

(PT) Aço (ES) Acero (FR) Acier (DE) Stahlkappe

UPPER RAW MATERIAL

FULL GRAIN LEATHER

(PT) Pele de Flor Integral (ES) Cuero Full Grain (FR) Cuir Plein
Fleur Grainé (DE) Glattleder

UPPER RAW MATERIAL

NUBUCK LEATHER

(PT) Pele Nubuck (ES) Cuero Nobuck (FR) Cuir Nubuck
(DE) Nubuck Leder

LINING MATERIAL

BREATHABLE TEXTILE

(PT) Têxtil Respirável (ES) Textil Respirable (FR) Textile
Respirant (DE) Atmungsaktiv Textil

X6

EN ISO 20345:2011 **CE S3 SRC**



SHOCK
ABSORBER

EU 36-47 / UK 3-12 / MP 225-307

PROTECTIVE MIDSOLE

STEEL

(PT) Aço (ES) Acero (FR) Acier (DE) Stahlkappe

PROTECTIVE TOE CAP

STEEL

(PT) Aço (ES) Acero (FR) Acier (DE) Stahlkappe

SOLE

DOUBLE DENSITY PU

(PT) Dupla Densidade PU (ES) Doble Densidade PU
(FR) Double Densité PU (DE) Zweikomponenten PU

UPPER RAW MATERIAL

NUBUCK LEATHER

(PT) Pele Nubuck (ES) Cuero Nobuck (FR) Cuir Nubuck
(DE) Nubuck Leder

LINING MATERIAL

BREATHABLE TEXTILE

(PT) Têxtil Respirável (ES) Textil Respirable (FR) Textile
Respirant (DE) Atmungsaktiv Textil



\ 1065.52 \



CLIMA CORK
SYSTEM



WATER
REPELLENT UPPER



ANTISTATIC

ICELANDICC

EN ISO 20345:2022 CE S3 CI FO LG SR

EU 36-50 / UK 3-14½ / MP 225-330

PROTECTIVE MIDSOLE

STEEL

(PT) Aço (ES) Acero (FR) Acier (DE) Stahlkappe

PROTECTIVE TOE CAP

COMPOSITE

(PT) Composite (ES) Composite (FR) Composite (DE)

Kunststoffkappe

SOLE

DOUBLE DENSITY PU

(PT) Dupla Densidade PU (ES) Doble Densidade PU

(FR) Double Densité PU (DE) Zweikomponenten PU

UPPER RAW MATERIAL

FULL GRAIN LEATHER

(PT) Pele de Flor Integral (ES) Cuero Full Grain (FR) Cuir Plein

Fleur Grainé (DE) Glattleder

LINING MATERIAL

NATURAL LAMBSKIN

(PT) Pele Natural de Carneiro (ES) Piel de Cordero Natural

(FR) Peau de Mouton Naturelle (DE) Natürliches Lamm

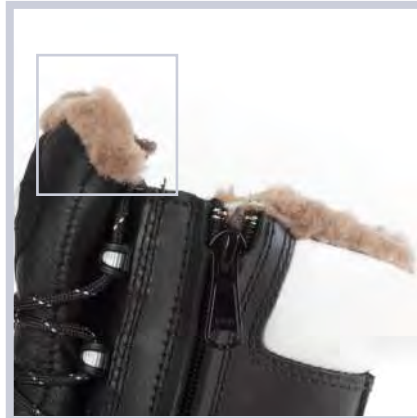
Futterf



\ 1625.00 \



2 SIDE ZIPS



NATURAL LAMBSKIN



CLIMA CORK SYSTEM



RESISTANT
UP TO -30°C



WATER
REPELLENT UPPER



ANTI-SLIP
SOLE



ASPHALT BOOT

EN ISO 20345:2022 CE S2 CI HI FO HRO



EU 39-47 / UK 6-12 / MP 247-307

PROTECTIVE MIDSOLE

-

PROTECTIVE TOE CAP

STEEL

(PT) Aço (ES) Acero (FR) Acier (DE) Stahlkappe

SOLE

DIRECT INJECTED PU + RUBBER

(PT) PU Diretamente Injetado + Borracha (ES) PU Inyectado + Caucho (FR) PU Injecté Directement + Nitril (DE) Direkt Eingespritztes PU + Gummi

UPPER RAW MATERIAL

FULL GRAIN LEATHER

(PT) Pele de Flor Integral (ES) Cuero Full Grain (FR) Cuir Plein Fleur Grainé (DE) Glattleder

LINING MATERIAL

BREATHABLE TEXTILE

(PT) Têxtil Respirável (ES) Textil Respirable (FR) Textile Respirant (DE) Atmungsaktiv Textil



\ 6052.05 \



\ 1023.50 \

NEW PROTECTOR

EN ISO 20345:2022 CE S3L CI HI HRO SC SR



\ 1052.01 \

NEW BARCELONA

EN ISO 20345:2022 CE S3L CI HI HRO SC SR



CLIMA CORK SYSTEM

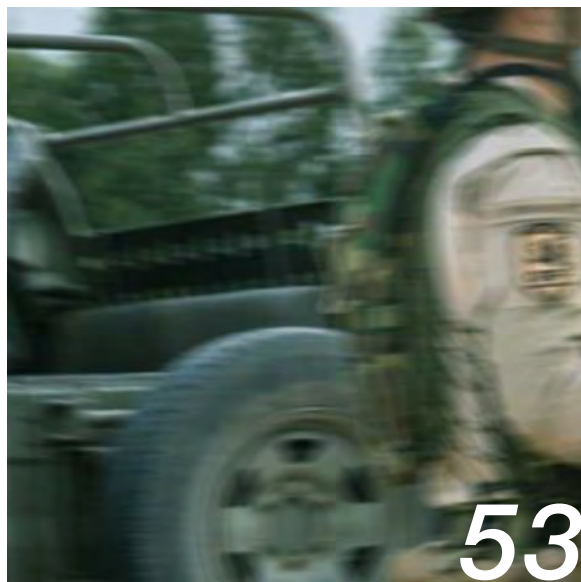


RESISTANT UP TO 300°C



ANTISTATIC

FF/RF collection



FÉNIX 5.1 PRO

EN ISO 15090:2012 TIPO 2 H13 F2A

EN ISO 17249:2022 / AC 2014 CLASS 2

EN ISO 20345:2011 CE S3 WR CI HI AN M HRO SRC

EU 36-48 / UK 3-13 / MP 225-315



PROTECTIVE MIDSOLE

KEVLAR

(PT) Kevlar (ES) Kevlar (FR) Kevlar (DE) Kevlar

PROTECTIVE TOE CAP

FIBERGLASS

(PT) Fibra de Vidro (ES) Fibra de Vidrio (FR) Fibre de Verre (DE) Glasfaser

SOLE

FIREFOX - VIBRAM FIRE-REARANTANT RUBBER

(PT) Borracha Ignífuga - Vibram (ES) Caucho Ignífugo - Vibram (FR) Nitril Ignífuge - Vibram (DE) Feuerhemmender Gummi - Vibram

UPPER RAW MATERIAL

FULL GRAIN LEATHER

(PT) Pele de Flor Integral (ES) Cuero Full Grain (FR) Cuir Plein Fleur Grainé (DE) Glattleder

LINING MATERIAL

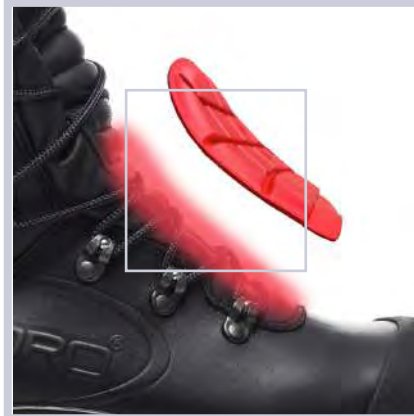
SYMPATEX WATERPROOF MEMBRANE

(PT) Membrana Impermeável Sympatex (ES) Membrana Impermeable Sympatex (FR) Membrane Impermeable Sympatex (DE) Sympatex Wasserdichte Membrane

\ 2018.30 \



ANKLE PROTECTION



METATARSAL PROTECTION



CLIMA CORK SYSTEM



FIREFIGHTERS



CHAINSAW PROTECTION



WATER REPELLENT UPPER



sympatex®



METAL FREE

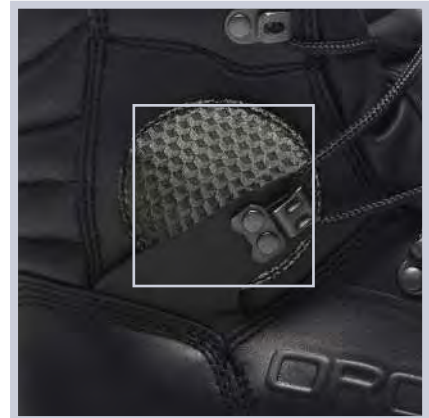


vibram®

FÉNIX 5.1

EN ISO 15090:2012 TIPO 2 HI3 F2A

EN ISO 20345:2022 CE S3 WR CI HI AN HRO SRC



ANKLE PROTECTION



METAL FREE

EU 36-48 / UK 3-13 / MP 225-315

PROTECTIVE MIDSOLE

KEVLAR

(PT) Kevlar (ES) Kevlar (FR) Kevlar (DE) Kevlar

PROTECTIVE TOE CAP

FIBERGLASS

(PT) Fibra de Vidro (ES) Fibra de Vidrio (FR) Fibre de Verre

(DE) Glassfaser

SOLE

FIREFOX - VIBRAM FIRE-RETTARDANT RUBBER

(PT) Borracha Ignífuga - Vibram (ES) Caucho Ignífugo -

Vibram (FR) Nitril Ignífuge - Vibram (DE) Feuerhemmender

Gummi - Vibram

UPPER RAW MATERIAL

FULL GRAIN LEATHER

(PT) Pele de Flor Integral (ES) Cuero Full Grain (FR) Cuir Plein

Fleur Grainé (DE) Glattleder

LINING MATERIAL

SYMPATEX WATERPROOF MEMBRANE

(PT) Membrana Impermeável Sympatex (ES) Membrana

Impermeable Sympatex (FR) Membrane Impermeable

Sympatex (DE) Sympatex Wasserdichte Membrane



FLAME 5.1

EN ISO 15090:2012 TIPO 2 HI3 F2A

EN ISO 20345:2022 CE S3 WR CI HI AN HRO SRC





EU 36-48 / UK 3-13 / MP 225-315

PROTECTIVE MIDSOLE

KEVLAR

(PT) Kevlar (ES) Kevlar (FR) Kevlar (DE) Kevlar

PROTECTIVE TOE CAP

FIBERGLASS

(PT) Fibra de Vidro (ES) Fibra de Vidrio (FR) Fibre de Verre (DE) Glasfaser

SOLE

FIREFOX - VIBRAM FIRE-RETTARDANT RUBBER

(PT) Borracha Ignífuga - Vibram (ES) Caucho Ignífugo - Vibram (FR) Nitril Ignífuge - Vibram (DE) Feuerhemmender Gummi - Vibram

UPPER RAW MATERIAL

FULL GRAIN LEATHER + TEXTILE

(PT) Pele de Flor Integral + Têxtil (ES) Cuero Full Grain + Textil (FR) Cuir Plein Fleur Grainé + Textile (DE) Glattleder + Textil

LINING MATERIAL

SYMPATEX WATERPROOF MEMBRANE

(PT) Membrana Impermeável Sympatex (ES) Membrana Impermeable Sympatex (FR) Membrane Impermeable Sympatex (DE) Sympatex Wasserdichte Membrane



\ 1076.50 \



METAL FREE



\ 1076.85 \

PATROL 2.1

EN ISO 20345:2011 CE 03 HRO SRC WRU



INTERNAL ZIPPER



EU 35-48 / UK 2 1/2-13 / MP 217-315

PROTECTIVE MIDSOLE

KEVLAR

(PT) Kevlar (ES) Kevlar (FR) Kevlar (DE) Kevlar

PROTECTIVE TOE CAP

-

SOLE

DIRECT INJECTED PU + RUBBER

(PT) PU Diretamente Injetado + Borracha (ES) PU Inyectado + Caucho (FR) PU Injecté Directement + Nitril (DE) Direkt Eingespritztes PU + Gummi

UPPER RAW MATERIAL

FULL GRAIN LEATHER + TEXTILE

(PT) Pele de Flor Integral + Têxtil (ES) Cuero Full Grain + Textil (FR) Cuir Plein Fleur Grainé + Textile (DE) Glattleder + Textil

LINING MATERIAL

BREATHABLE TEXTILE

(PT) Têxtil Respirável (ES) Textil Respirable (FR) Textile Respirant (DE) Atmungsaktiv Textil



SPACE TROOPER

EN ISO 20347:2022 CE 03 HRO SRC



EU 36-47 / UK 3-12 / MP 225-307

PROTECTIVE MIDSOLE

KEVLAR

(PT) Kevlar (ES) Kevlar (FR) Kevlar (DE) Kevlar

PROTECTIVE TOE CAP

-

SOLE

TPU + EVA PHYLON

(PT) TPU + Eva Phylon (ES) TPU + Eva Phylon (FR) TPU +
Eva Phylon (DE) TPU + Eva Phylon

UPPER RAW MATERIAL

HI-TECH TEXTILE

(PT) Têxtil Hi-Tech (ES) Textil Hi-Tech (FR) Textile Hi-Tech (DE)
High-Tech Textil

LINING MATERIAL

SYMPATEX WATERPROOF MEMBRANE

(PT) Membrana Impermeável Sympatex (ES) Membrana
Impermeable Sympatex (FR) Membrane Impermeable
Sympatex (DE) Sympatex Wasserdichte Membrane



S.A.S. BLACK BOOT

EN ISO 20347:2022 CE S2 WR CI HI AN FO HRO



LACCIC - SHOE LACES STORAGE SYSTEM



SOLE

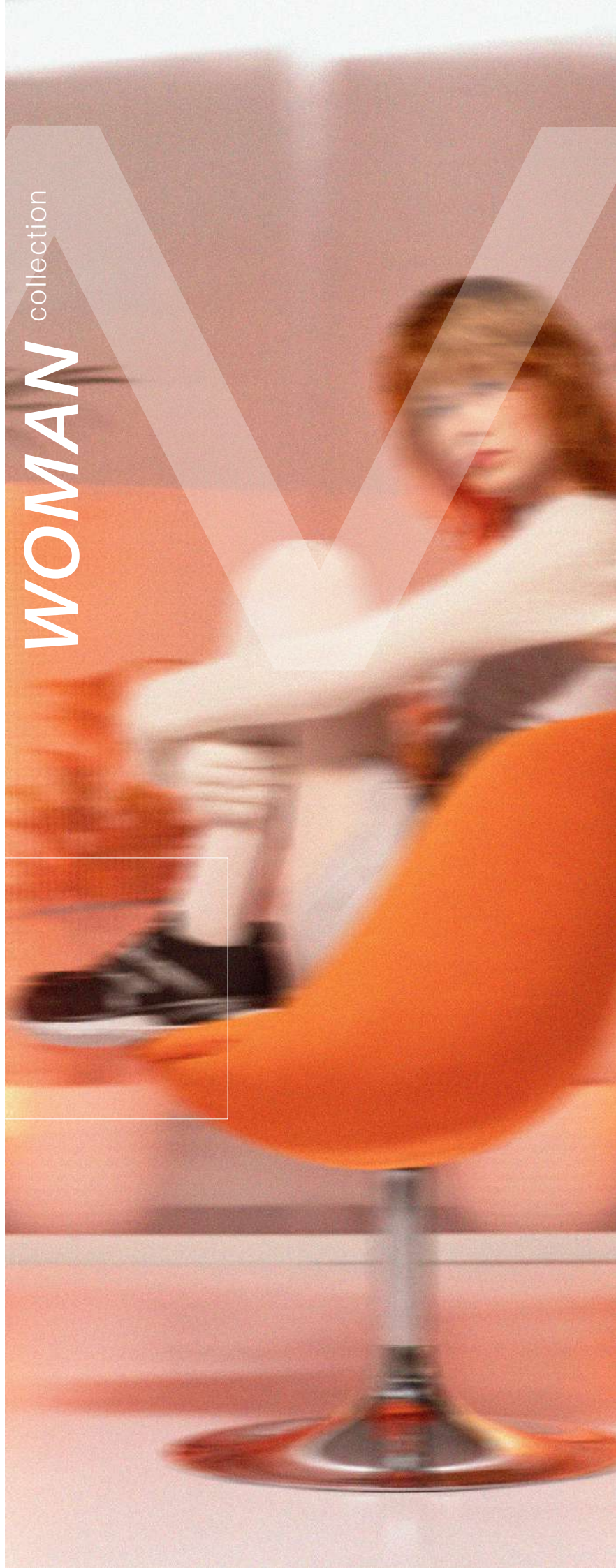
DIRECT INJECTED PU + VIBRAM

(PT) PU Diretamente Injetado + Vibram (ES) PU Inyectado
+ Vibram (FR) PU Injecté Directement + Vibram (DE) Direkt
Eingespritztes PU + Vibram





58



WOMAN collection

LYNX CLAY

EN ISO 20345:2022 **CE S3L CI HI FO SR**



EU 35-42 / UK 2^{1/2}-8 / MP 217-370

PROTECTIVE MIDSOLE

KEVLAR

(PT) Kevlar (ES) Kevlar (FR) Kevlar (DE) Kevlar

PROTECTIVE TOE CAP

COMPOSITE

(PT) Composite (ES) Composite (FR) Composite (DE)

Kunststoffkappe

SOLE

DOUBLE DENSITY PU

(PT) Dupla Densidade PU (ES) Doble Densidade PU

(FR) Doble Densité PU (DE) Zweikomponenten PU

UPPER RAW MATERIAL

BREATHABLE TEXTILE

(PT) Têxtil Respirável (ES) Textil Respirable (FR) Textile

Respirant (DE) Atmungsaktiv Textil

LINING MATERIAL

BREATHABLE TEXTILE

(PT) Têxtil Respirável (ES) Textil Respirable (FR) Textile

Respirant (DE) Atmungsaktiv Textil

LYNX TERRACOTA

EN ISO 20345:2022 **CE S3L CI HI FO SR**



BIANCA

EN ISO 20345:2011 CE S3 SRC

EU 36-42 / UK 3-8 / MP 225-270

PROTECTIVE MIDSOLE

KEVLAR

(PT) Kevlar (ES) Kevlar (FR) Kevlar (DE) Kevlar

PROTECTIVE TOE CAP

STEEL

(PT) Aço (ES) Acero (FR) Acier (DE) Stahlkappe

SOLE

DIRECT INJECTED PU

(PT) PU Diretamente Injetado (ES) PU Inyectado Directo
(FR) PU Injecté Directement (DE) Direkt Eingespritztes PU

UPPER RAW MATERIAL

FULL GRAIN LEATHER

(PT) Pele de Flor Integral (ES) Cuero Full Grain (FR) Cuir Plein
Fleur Grainé (DE) Glattleder

LINING MATERIAL

ANILINE LEATHER

(PT) Pele Anilina (ES) Cuero Anilina (FR) Cuir Aniline
(DE) Aniline Leder



\ 1118.10 \



\ 1153.10 \

EVA

EN ISO 20345:2011 CE S2P SRC



LUCY

EN ISO 20345:2011 CE S3 HRO SRC



EU 36-42 / UK 3-8 / MP 225-270

PROTECTIVE MIDSOLE

KEVLAR

(PT) Kevlar (ES) Kevlar (FR) Kevlar (DE) Kevlar

PROTECTIVE TOE CAP

STEEL

(PT) Aço (ES) Acero (FR) Acier (DE) Stahlkappe

SOLE

DIRECT INJECTED PU

(PT) PU Diretamente Injetado (ES) PU Inyectado Directo

(FR) PU Injecté Directement (DE) Direkt Eingespritztes PU

UPPER RAW MATERIAL

FULL GRAIN LEATHER

(PT) Pele de Flor Integral (ES) Cuero Full Grain (FR) Cuir Plein

Fleur Grainé (DE) Glattleder

LINING MATERIAL

ANILINE LEATHER

(PT) Pele Anilina (ES) Cuero Anilina (FR) Cuir Aniline

(DE) Aniline Leder

\ 1021.10 \



\ 1016.10 \

CYNDI

EN ISO 20345:2011 CE S3 SRC



\ 1036.30 \

SANDY

EN ISO 20345:2011 CE S2P SRC



WOMAN



ESD
ELECTRO-STATIC DISCHARGE



ANTISTATIC



ANTI-SLIP
SOLE

MICHELLE

EN ISO 20345:2011 CE S3 HRO SRC



EU 35-42 / UK 2^{1/2}-8 / MP 217-270

PROTECTIVE MIDSOLE

KEVLAR

(PT) Kevlar (ES) Kevlar (FR) Kevlar (DE) Kevlar

PROTECTIVE TOE CAP

STEEL

(PT) Aço (ES) Acero (FR) Acier (DE) Stahlkappe

SOLE

DIRECT INJECTED PU + RUBBER

(PT) PU Diretamente Injetado + Borracha (ES) PU Inyectado

Directo + Caucho (FR) PU Injecté Directement + Nitril

(DE) Direkt Eingespritztes PU + Gummi

UPPER RAW MATERIAL

NUBUCK LEATHER

(PT) Pele Nubuck (ES) Cuero Nobuck (FR) Cuir Nubuck

(DE) Nubuck Leder

LINING MATERIAL

BREATHABLE TEXTILE

(PT) Têxtil Respirável (ES) Textil Respirable (FR) Textile

Respirant (DE) Atmungsaktiv Textil



\ 1084.24 \



\ 1215.18 \

LEIA 22

EN ISO 20345:2011 CE S3L CI HI FO SR

EU 35-42 / UK 2^{1/2}-8 / MP 217-270

PROTECTIVE MIDSOLE

KEVLAR

(PT) Kevlar (ES) Kevlar (FR) Kevlar (DE) Kevlar

PROTECTIVE TOE CAP

COMPOSITE

(PT) Composite (ES) Composite (FR) Composite (DE)

Kunststoffkappe

SOLE

DOUBLE DENSITY PU

(PT) Dupla Densidade PU (ES) Doble Densidade PU (FR)

Double Densité PU (DE) Zweikomponenten PU

UPPER RAW MATERIAL

HI-TECH TEXTILE

(PT) Têxtil Hi-Tech (ES) Textil Hi-Tech (FR) Textile Hi-Tech (DE)

High-Tech Textil

LINING MATERIAL

DRYLEX TEXTILE

(PT) Têxtil Drylex (ES) Drylex Respirable (FR) Drylex Respirant

(DE) Drylex Textil



ACCESSORIES

SPODOS 3V

SIZE 36-47



\ 9999.95 \

\ 9999.96 \

\ 9999.97 \

FLAT FEET

NORMAL FEET

ARCH FEET

FEATURES

HEALTH OF YOUR FEET

Anti-Microbial
Active Carbon
Thermoregulatory Effect
Steam Permeable
100% Breathable
Washable

THINKING ABOUT COMFORT

Anti-Fatigue
Extra Light
High Absorption Capacity
High Memory Capacity
Different Densities

ECOFRIENDLY

Made from Recycled Materials

ECOFRIENDLY

Made from Recycled Materials

SIZE 39-42 / 43-47

SIZE 36-47

PRO SOCKS

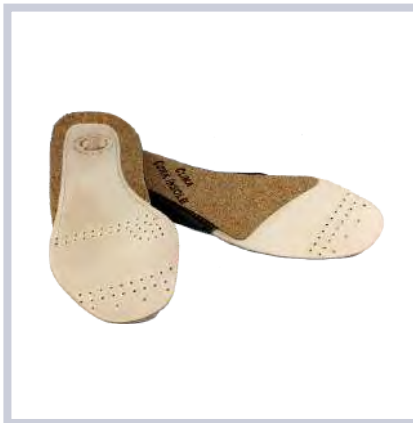


\ 9999.79 \

ECO SOCKS



\ 9999.73 \



CROMIUM FREE LEATHER

Cork and Natural Leather
Breathable
Thermoregulatory Effect



LAVORO X-MAX

Selected premium materials and accurate design to keep your feet feeling cool, dry and fresher for longer.

SPODOS[®]

FOOT SCIENCE CENTER

64





Descobre mais no livro: “**O PÉ EM CONTEXTO DE TRABALHO, A bioengenharia do calçado profissional**”.
Find out more in the book: “**THE FOOT IN THE WORK CONTEXT: The Bioengineering of Professional Footwear**”.

FEET HEALTH AT WORK

(PT)

Cuidamos da saúde dos pés em contexto de trabalho

Em estreita parceria com as empresas, otimizamos a prevenção, ajudamos a minimizar o absentismo, e a reduzir os casos de dispensa de utilização de equipamentos de proteção individual.

Para o melhor aconselhamento de calçado profissional, consulte o SPODOS, que auxilia as empresas a cuidar da qualidade de vida do pé em contexto laboral:

- 1.** Caracteriza o ambiente de trabalho;
- 2.** Aconselha, depois de identificar necessidades;
- 3.** Realiza análises podológicas e biomédicas aos colaboradores, em estreita parceria com os especialistas em Medicina do Trabalho, Ortopedia e/ou com Técnicos de Higiene, Saúde e Segurança no Trabalho;
- 4.** Diagnostica patologias nos pés dos colaboradores e recomenda terapias;
- 5.** Supervisiona a eficiência das propostas realizadas;
- 6.** Designs customized solutions for deformed feet;
- 7.** Realiza formações sobre a saúde do pé em contexto laboral.

(EN)

We take care of foot health in the workplace

In close partnership with companies, we optimize prevention, help minimize absenteeism, and reduce cases of exemption from the use of personal protective equipment.

We care for foot health in the workplace like no one else.

For the best professional footwear advice, consult SPODOS, which supports companies in promoting foot health and quality of life in the workplace:

- 1.** Assesses the work environment;
- 2.** Provides guidance after identifying specific needs;
- 3.** Carries out podiatric and biomedical assessments of employees, in close collaboration with specialists in Occupational Medicine, Orthopedics, and/or Occupational Health and Safety Technicians;
- 4.** Assesses the work environment;
- 5.** Monitors the effectiveness of the recommended solutions;
- 6.** Monitors the effectiveness of the recommended solutions;
- 7.** Delivers training on foot health in the workplace.

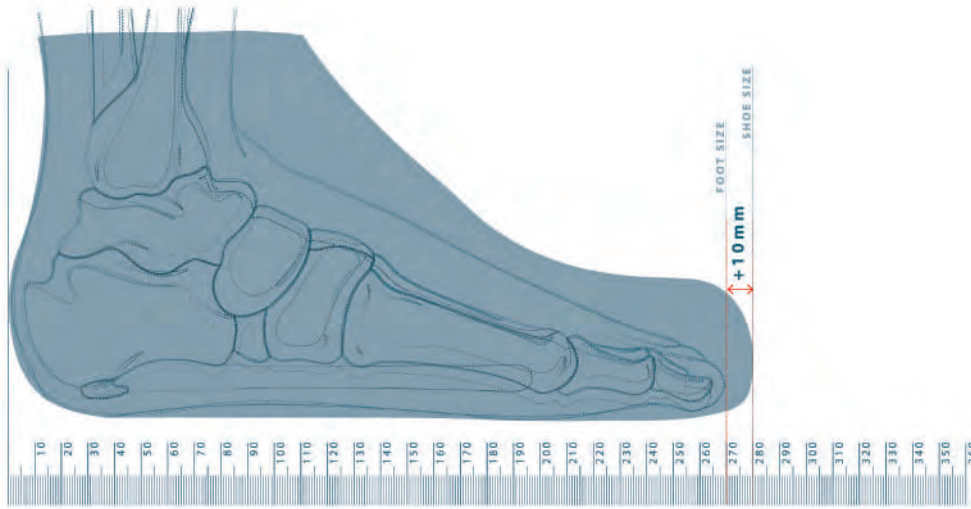


O COMPRIMENTO DO SAPATO (EM MM) DEVE SER SEMPRE 10MM MAIOR DO QUE O COMPRIMENTO DO PÉ.

THE SHOE LENGTH (IN) SHOULD ALWAYS BE 10MM LONGER THAN THE FOOT LENGTH.

Por exemplo, se o pé medir 270mm, o sapato deverá 280mm.

For example, if the foot measures 270mm, the shoe should measure 280mm.



No entanto, se o pé medir 272mm (P.E.), o sapato deverá medir 287mm.

Um sapato de 280mm não proporcionaria os 10mm de espaço extra recomendados e o utilizador não tiraria total proveito do conforto e da experiência de usar um sapato Trabalho.

However, if the foot measures 272mm (P.E.), the shoe should measure 287mm.

A 280mm shoe would not provide the recommended 10 mm extra space, and the use wouldn't fully benefit from the comfort and experience of wearing a Lavoro shoe.

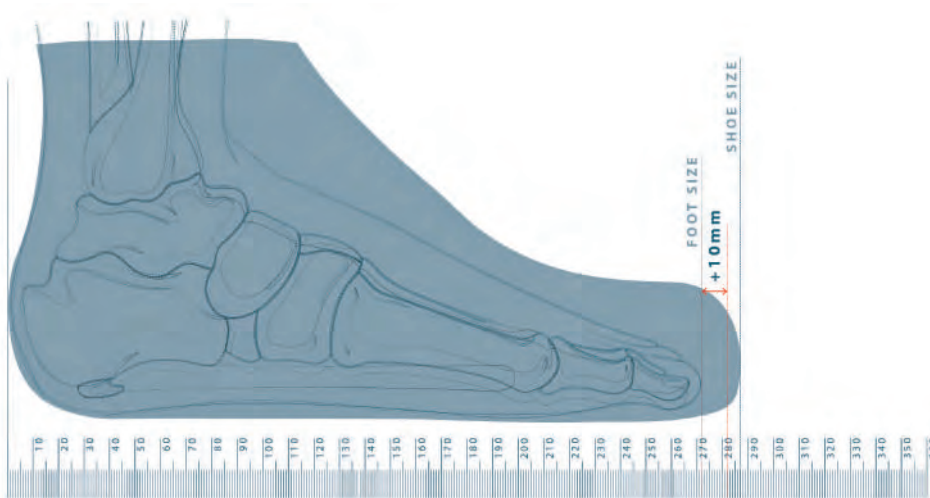


TABELA DE TAMANHOS

Size chart

FOOT LENGTH (MM)	195 202	203 210	211 217	218 225	226 232	233 240	241 247	248 255	256 262	263 270	271 277	278 285	286 292	293 300	301 307	308 315	316 322	323 330	331 337	338 345	346 352
MONDOPOINT R2 (MM)	212	220	227	235	242	250	257	265	272	280	287	295	302	310	317	325	332	340	347	355	362
EU	33	34	35	36	37	38	39	40	41	42	43	44	45	46	47	48	49	50	51	52	53
UK	1 ^{1/2}	2	2 ^{1/2}	3	4	5	6	6 ^{1/2}	7	8	9	10	10 ^{1/2}	11	12	13	14	14 ^{1/2}	15	16	17



Descobre mais no livro: "O PÉ EM CONTEXTO DE TRABALHO, A bioengenharia do calçado profissional".

Find out more in the book: "THE FOOT IN THE WORK CONTEXT: The Bioengineering of Professional Footwear".



PPE STANDARDS

SAFETY FOOTWEAR STANDARDS

EN ISO 20345:2011

SB (safety basic) - 200J (joule) Toecap protection.

S1 - Same as SB + Closed heel, antistatic protection and energy absorption in the heel.

S2 - Same as S1 + Waterproof exterior to prevent water penetration.

S3 - Same as S2 + Midsole penetration resistance to prevent sharp objects from penetrating the footwear and damaging your foot.

EN ISO 20345:2022

S6 - New rating introduced by the new norm (20345:2022).
Same as S2 + Water resistance for the whole piece of footwear.

S7 - New rating introduced by the new norm (20345:2022).
Same as S3 + Water resistance for the whole piece of footwear.

SLIP - RESISTANCE RATINGS

EN ISO 20345:2011

SRA - Tested on ceramic tile wetted with dilute soap solution.

SRB - Tested on smooth steel with glycerol.

SRC - Tested under both the above conditions.

EN ISO 20345:2022

SR - Slip resistance - on ceramic tile floor with glycerin.

Ø - Has not been tested according to this standards as it offers studs or spikes, or is for use within special workplaces and is therefore not applicable.

ADDITIONAL REQUIREMENTS

A - Antistatic - Protects against static electrical charges.

AN - Ankle protection.

C - Partially conductive footwear.

CI - Cold Insulation.

CR - Cut-Resistant upper.

E - Energy absorption of seat region.

FO - Resistance to fuel oil.

HI - Hot Insulation.

HRO - Resistance to hot contact at 300°.

PL - Penetration resistance (non-metal) - Penetration.

LG - Ladder grip outsole.

M - Metatarsal protection (impacts up to 100J).

P - Perforation resistance (metal). Tested with large nail (Ø 4,5mm).

PS - Penetration resistance (non-metal). Penetration tested with small nail (Ø 3,0mm).

SC - Scuff cap abrasion.

WPA - Water penetration and absorption.

WR - Water-resistance with waterproof membrane.

THE CLIMA CORK SYSTEM



The Lavoro Clima Cork System creates the perfect environment inside your shoes. The cork layer between the sole and the insole keeps your feet cool in summer and warm in winter. In addition, it distributes weight evenly, reducing fatigue.

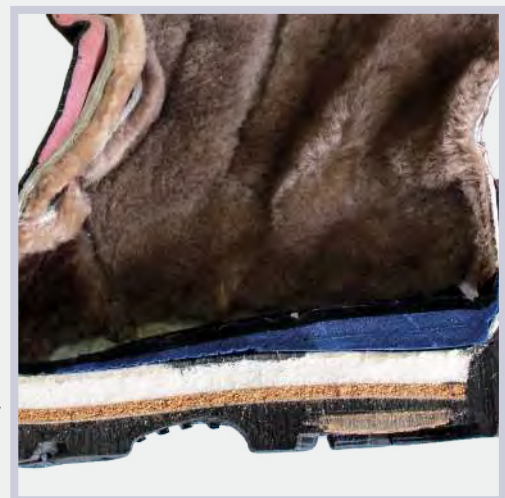
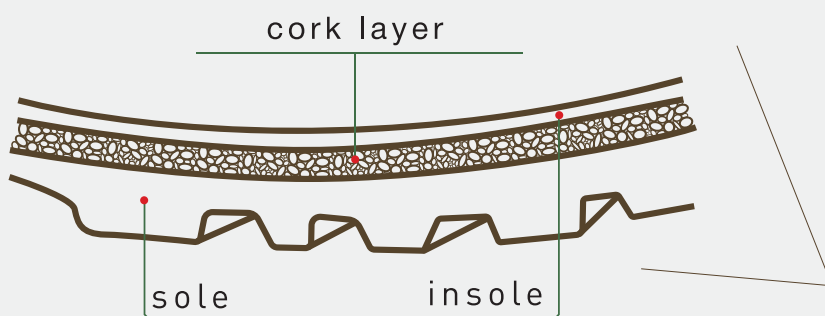
WHAT ARE THE BENEFITS?

FOR THE USER

- Thermal Control
- Reduction of Fatigue
- Impact Absorption
- Comfort

FOR THE PLANET

- Renewable Resource
- Biodegradable
- Recycable
- Ecosystem Support
- Carbon Capture



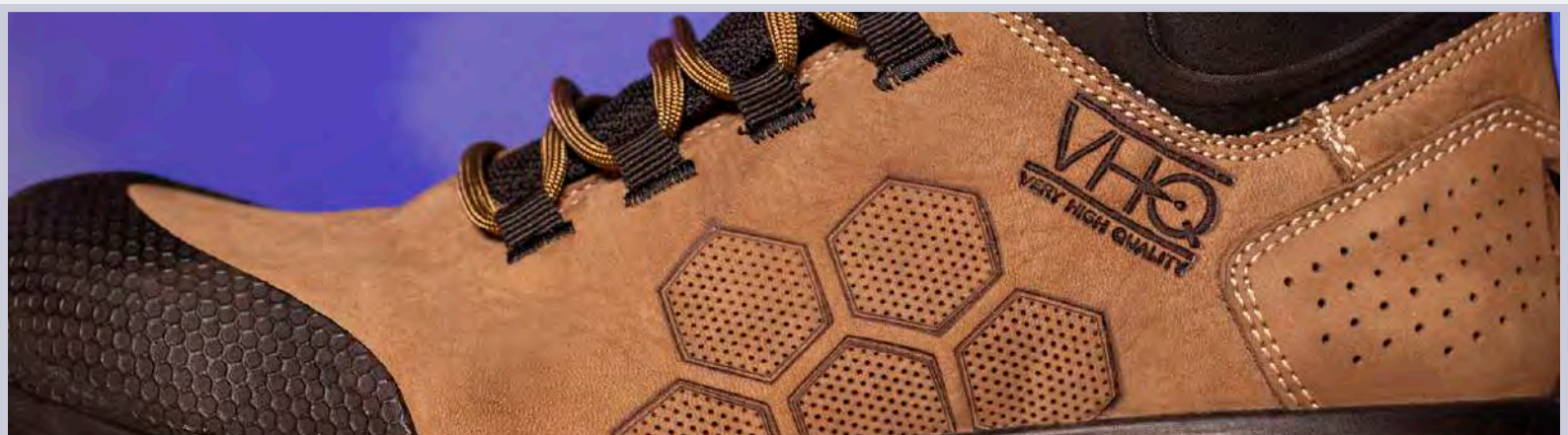
LEATHER IS BACK

With traced and 100% biodegradable production, responsible leather guarantees a sustainable future for the planet and extra comfort for professionals in a wide variety of activities. Its use in safety footwear provides users with long-term benefits every day and over the years. Furthermore, because the leather maintains its essential characteristics of resistance to fire and abrasion and water repellency: Easy to maintain and ideal elasticity for all movements. Hypoallergenic, it also promotes perspiration. At Lavoro we therefore continue to believe in this special raw material, applying only responsible leather in our durable safety shoes.

Safe and technologically advanced products are our strength.



The **VHQ (Very High Quality)** seal is a certification granted to Lavoro professional footwear, ensuring not only safety and protection but also comfort and foot health maintenance. The evaluation, conducted by SPODOS – Foot Science Center, analyzes factors such as internal temperature, weight, flexibility, stability, shock absorption, and materials used, combining knowledge of podiatry and biomedical engineering to ensure the footwear's quality and biomechanical suitability.





LAVORO®

ENGINEERING LIFE

AUTHORISED DISTRIBUTOR

LAVORO EUROPE
SOL - PINHEIRO
4810-718
GUIMARÃES - PORTUGAL

T. +351 253 776 666
F. +351 253 140 905

INFO@LAVOROEUROPE.COM

ICC-Ind. e Comércio de Calçado S.A.
NIF: 501644220
Capital Social: €1.416.495,00
Inscrição no R.C. Guimarães
930 e n.º 2453



In the interest of product development Lavoro reserves the right to change or amend the specifications of the products, without previous notice.